

Gwinnett Eastern Regional Infrastructure Project

Project Overview

The Eastern Regional Infrastructure (ERI) Project includes approximately:

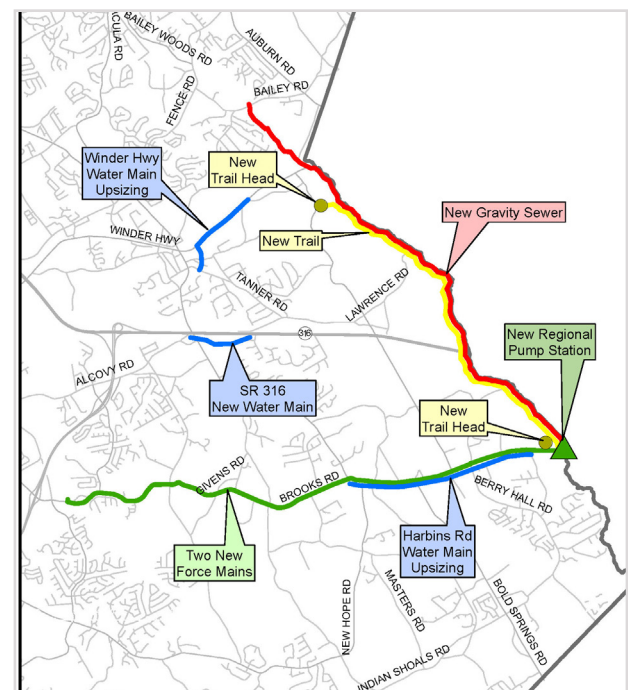
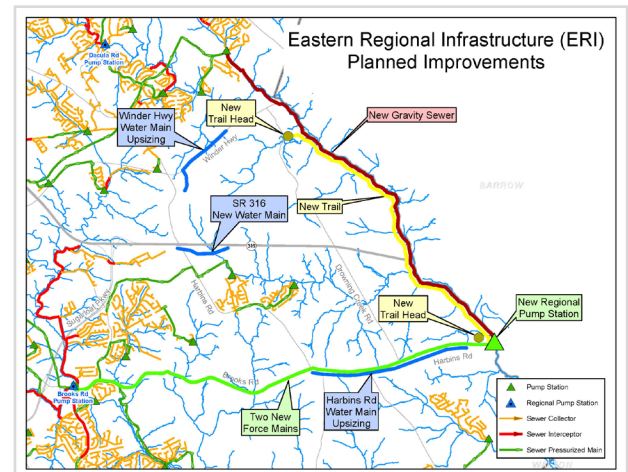
- Five miles of new and upsized water mains
- Six miles of new gravity sewer along the Apalachee River
- Seven miles of parallel wastewater force mains along Harbins Road and Brooks Road
- A new 14 million-gallon-per-day regional sewer pump station on Harbins Road
- Five miles of new public greenway trails and two new trailheads

The project will provide sewer service and upgrades to water service along the eastern boundary of Gwinnett County.

Sustainable construction practices that promote environmental stewardship and innovation will be used on this project.

The Board of Commissioners awarded the \$125 million contract for the design and construction of the ERI Project to John D. Stephens, Inc (JDS). The project will be funded by the departments of Water Resources and Community Services, including revenue from the 2017 SPLOST.

Construction is anticipated to start in late 2021 and completed in early 2024. Following is a map depicting key components of this ERI project, as well as select displays from the JDS proposal for the pump station and trailhead.



Maps of Project

Renderings






Trailhead Rendering



Overall View of Pump Station & Trailhead

Stay in the Know

Quick Contact

 Pam Ledbetter
 770-329-9799
 ERI@GwinnettCounty.com

Sign Up for Project Updates

Go to the **Contact Us** page & scroll down to see 'Join Email List'. You'll be the first to know when updates are made!

[Join Email List](#)

For more information, visit www.gwinnetteri.com